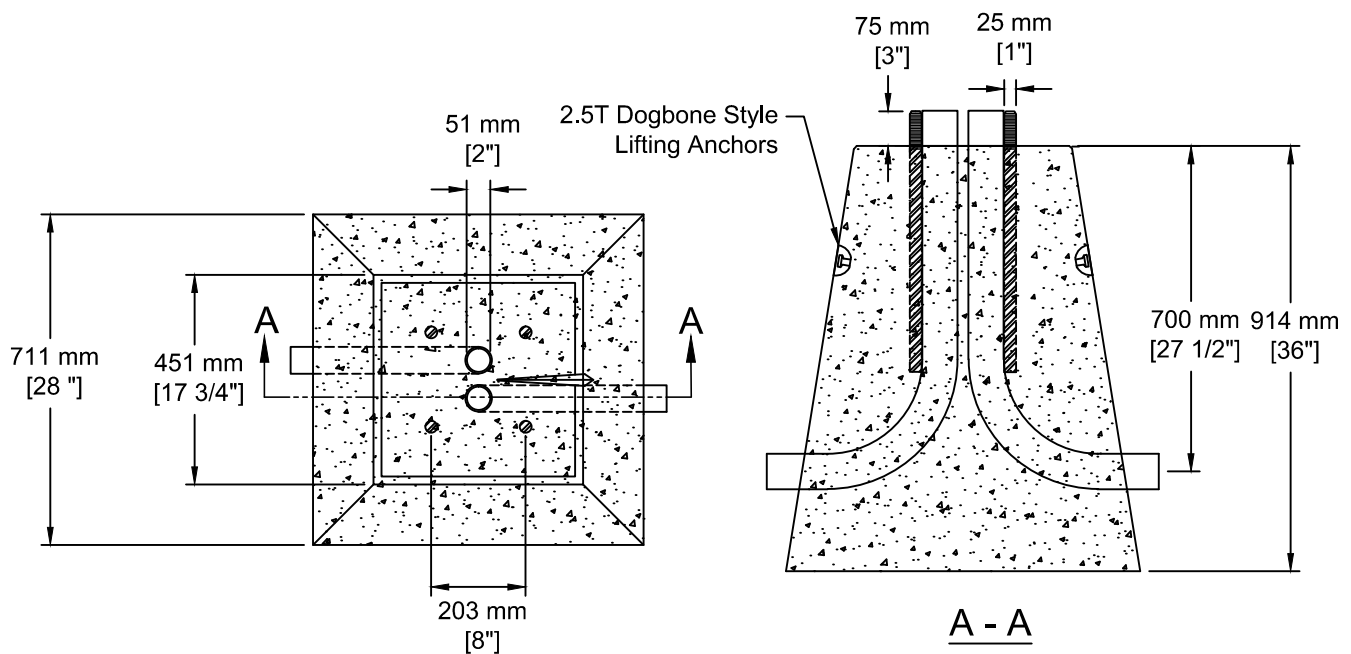


INSTALLATION INFORMATION

2 - 2.5T DOGBONE STYLE LIFTING ANCHORS

DWG # - E-10 U-L-1

WEIGHT: 1598 LBS / 725 KG



TEL: 250-495-7556
 socp@socp.ca
 www.socp.ca

0.9m (3') Street Light
 Standard Base - U-L-1

Product #
1218