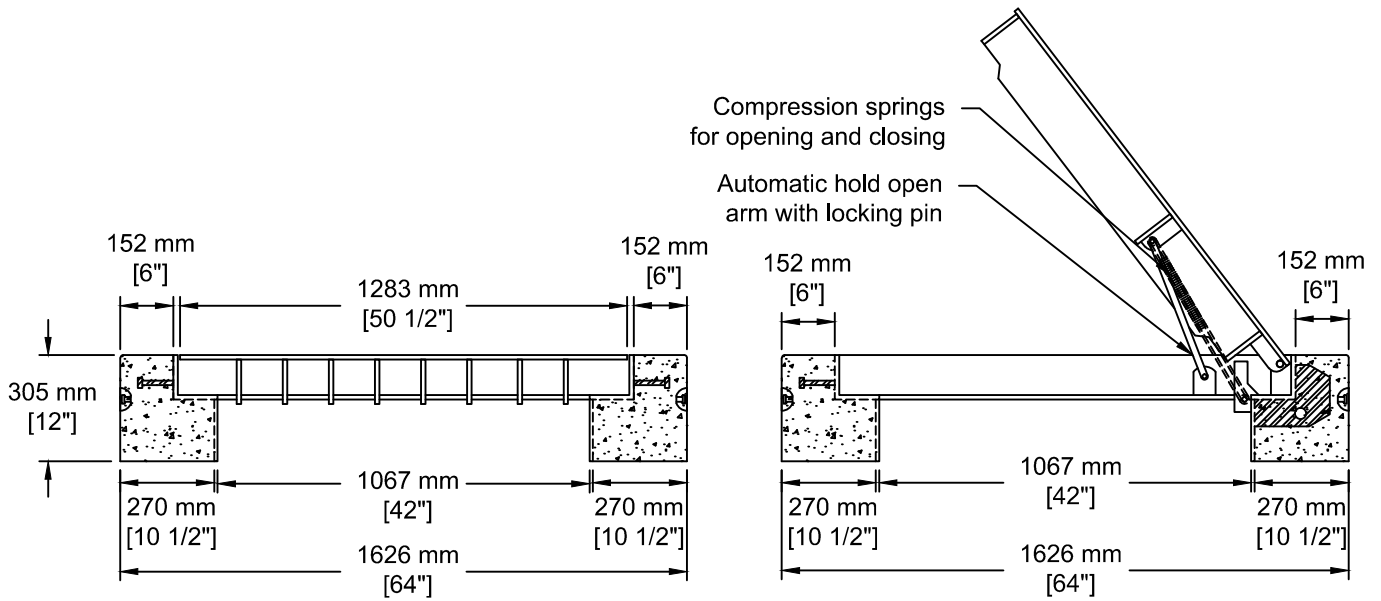


INSTALLATION INFORMATION
 DESIGNED FOR H-20 DYNAMIC LOADING
 4 - 2.5T DOGBONE STYLE LIFTING ANCHORS
 WEIGHT: LBS / KG



Fortis # 755-0612



TEL: 250-495-7556
 socp@socp.ca
 www.socp.ca

1592 Fortis 3 Phase
 Junction Vault Lid - H20 Dynamic

Product #
1123