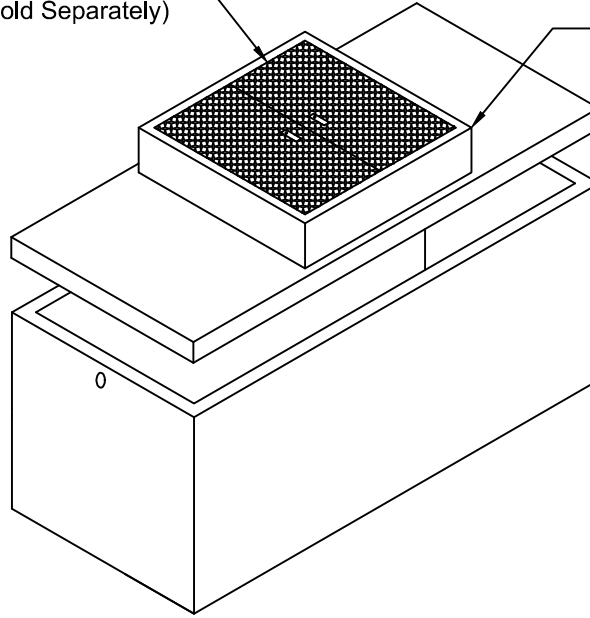


1346 mm x 1346 mm (53" x 53")  
Hatch Style Lid (Sold Separately)

Concrete Riser to Grade:  
As Required (Sold Separately)

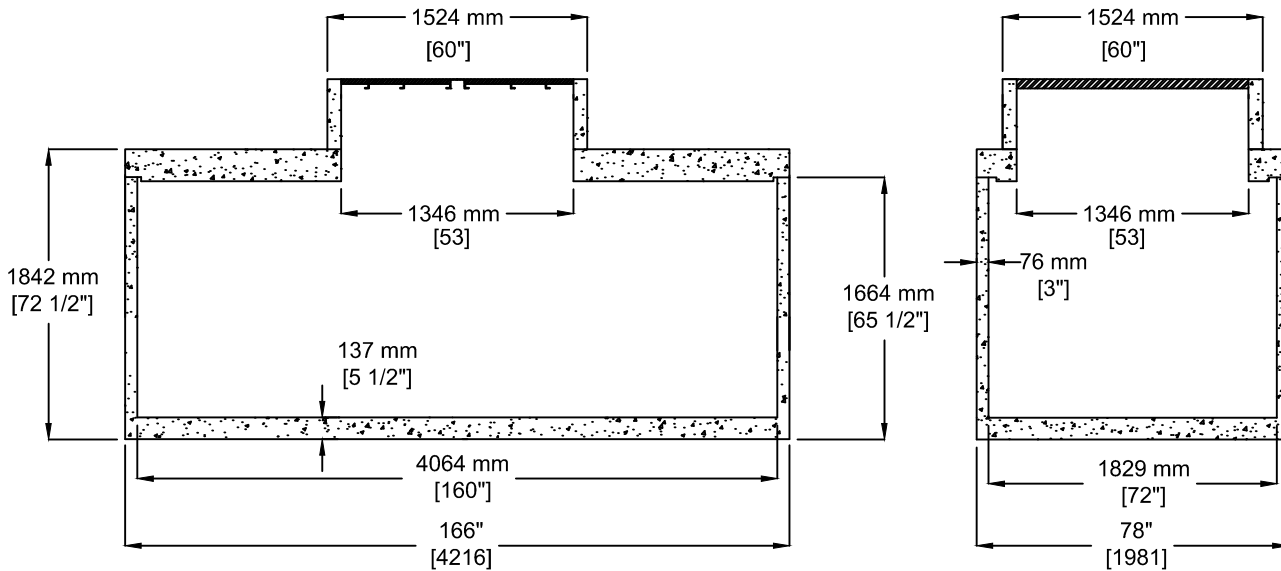


INSTALLATION INFORMATION

4 - 5T LIFTING ANCHORS (LID)  
4 - 5T LIFTING ANCHORS (TANK)  
GASKET: CONSEAL BUTYL SEALANT

DESIGN SPECIFICATION

MANUFACTURED IN ACCORDANCE WITH: CSA A23.4, B-66  
ASTM C1227



**SOC**  
SOUTH OKANAGAN  
CONCRETE PRODUCTS LTD

TEL: 250-495-7556  
socp@socp.ca  
www.socp.ca

Box 419, 11602 - 115 st Osoyoos, BC V0H 1V0 FAX: 250-495-3556

(2000) TS-1Ch Water Meter Chamber  
c/w 1346 mm x 1346 mm (53" x 53")  
Opening

Product #  
0505