

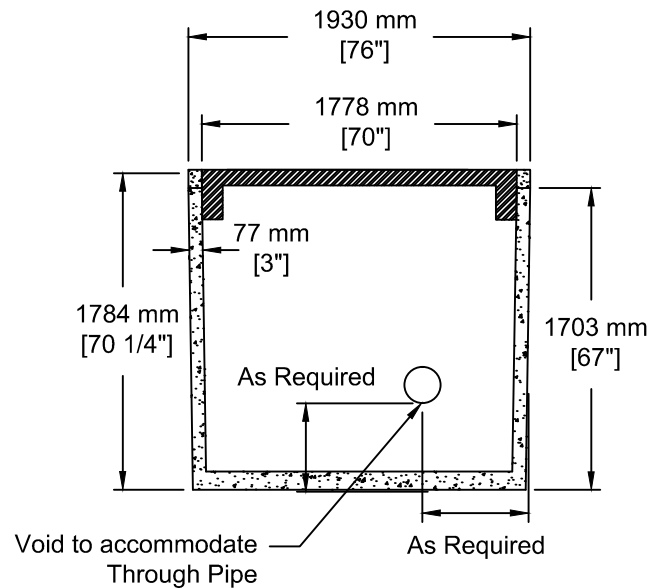
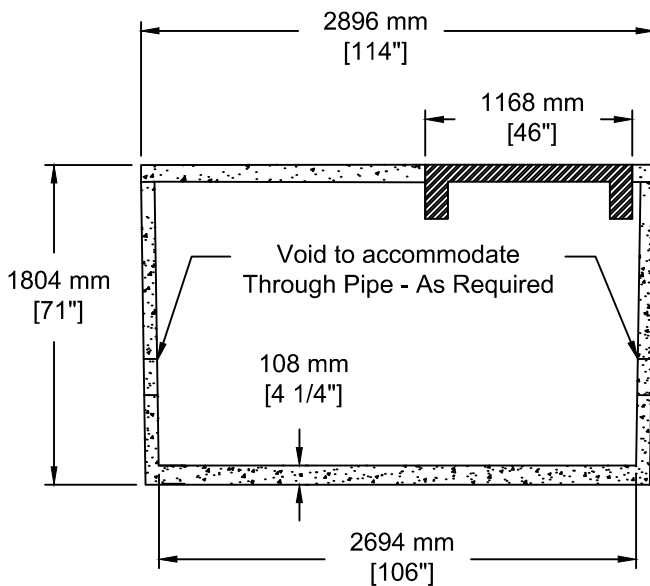
INSTALLATION INFORMATION

TANK - SPREADER BAR & CABLES FOR HANDLING
 HATCH STYLE "CAST-IN" ACCESS HATCH SOLD SEPARATELY
 LID C/ 4 - 3/8" R-ANCHORS FOR HANDLING
 GASKET: CONSEAL BUTYL SEALANT
 WEIGHT: LBS / KG (LID)
 WEIGHT: LBS / KG (TANK)

Void to Accommodate Through Pipe
 1 - Each End

DESIGN SPECIFICATION

MANUFACTURED IN ACCORDANCE WITH: CSA A23.4, B-66
 ASTM C1227



SOCPC
 SOUTH OKANAGAN
 CONCRETE PRODUCTS LTD
 Box 419, 11602 - 115 st Osoyoos, BC V0H 1V0
 TEL: 250-495-7556
 socp@socp.ca
 www.socp.ca
 FAX: 250-495-3556

(1450) TS-1Ch WMC
 c/w Hatch Cast Into Lid
 1473 mm x 1880 mm (58"x74") Opening

Product #
 0502