

INSTALLATION INFORMATION

TANK - SPREADER BAR & CABLES FOR HANDLING

LID C/ 4 - 10 MM (3/8") R-ANCHORS FOR HANDLING

GASKET: CONSEAL BUTYL SEALANT

WEIGHT: 3900 LBS / 1769 KG (LID)

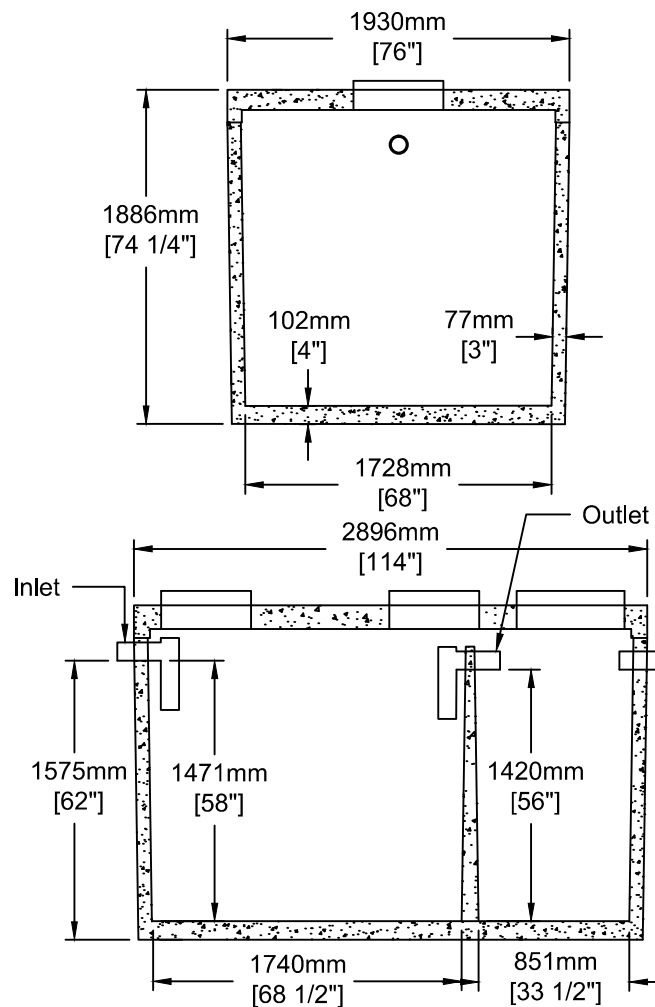
WEIGHT: 9458LBS / 4290 KG (TANK)

DESIGN SPECIFICATION

RESIDENTIAL LOADING

BURIAL DEPTH - **NO GREATER THAN 1M** ASTM C1227

CSA B-66



TEL: 250-495-7556
socp@socp.ca
www.socp.ca

(1500) TS-2Ch 4546 litres (1000 gal)
1-Comp Septic Tank / 2273 litres (500 gal)
Pump Chamber

Product #
0134