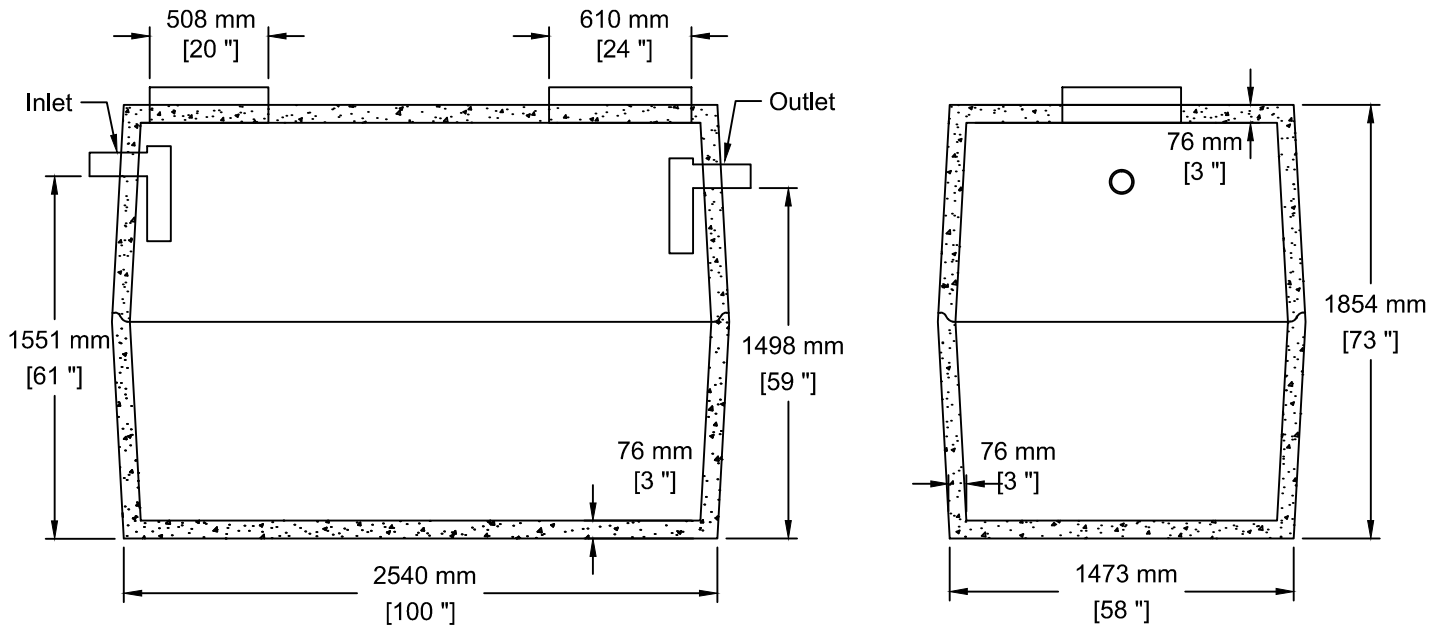


**INSTALLATION INFORMATION**  
 SPREADER BAR & CABLES FOR HANDLING  
 GASKET: 1" CONSEAL BUTYL SEALANT  
 WEIGHT: 4580 LBS / 2077 KG (TOP)  
 WEIGHT: 4440 LBS / 2014 KG (BOTTOM)

**DESIGN SPECIFICATION**  
 RESIDENTIAL LOADING  
 BURIAL DEPTH - **NO GREATER THAN 1M**  
 MANUFACTURED IN ACCORDANCE WITH: CSA A23.4, B-66  
 ASTM C1227



TEL: 250-495-7556  
 socp@socp.ca  
 www.socp.ca

MS-1Ch 4546 litres (1000 gal)  
 Septic Tank

Product #

0104