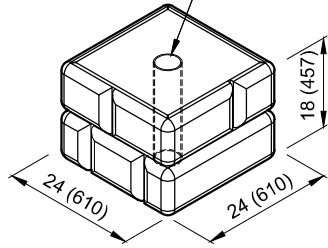


COLUMN BLOCK

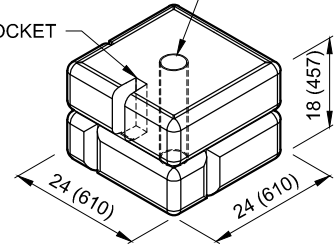
#0848 C

CENTERED 4 (102) DIAMETER
PVC PIPE SLEEVE THRU BLOCK**COLUMN BLOCK - END**

#0849 EC

CENTERED 4 (102) DIAMETER
PVC PIPE SLEEVE THRU BLOCK

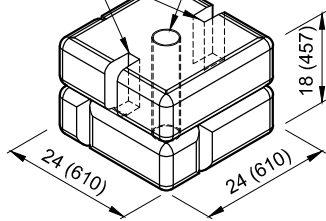
1 - FENCE POCKET

**COLUMN BLOCK - LINE**

#0850 LC

CENTERED 4 (102) DIAMETER
PVC PIPE SLEEVE THRU BLOCK

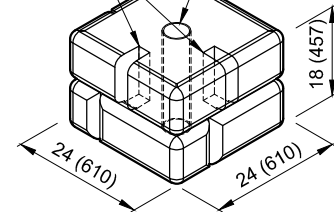
2 - FENCE POCKETS

**COLUMN BLOCK - CORNER**

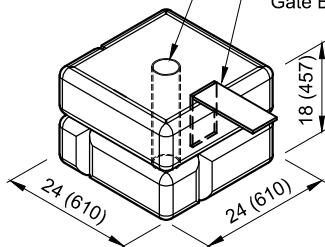
#0851 CC

CENTERED 4 (102) DIAMETER
PVC PIPE SLEEVE THRU BLOCK

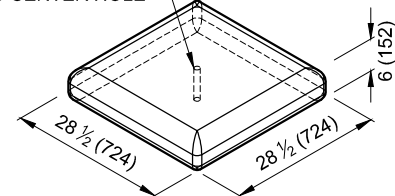
2 - FENCE POCKETS

**COLUMN BLOCK - GATE**

#0852 GC

CENTERED 4 (102) DIAMETER
PVC PIPE SLEEVE THRU BLOCKOPTIONAL
Gate Bracket Attachment**COLUMN CAP**

#0853 Cap(C)

OPTIONAL 1 (25) DIAMETER
THRU CENTER HOLE

1. Units for dimensions are inches (mm), typical unless noted otherwise.
2. Confirm block production with licensed Redi-Rock manufacturer.
3. Center of Gravity is measured from the back of block.
4. Actual block volumes and weights may vary.
5. Weights are based upon a concrete density of 143 lb/ft³ (2291kg/m³).

6. Half blocks contain a fork slot on only one side of the block.
7. Interface Shear knobs are typically 10" (254mm) diameter by 4" (102mm) tall. Smaller knob diameters are available.



TEL: 250-495-7556
socp@socp.ca
www.socp.ca

Block Library
COLUMN BLOCKS